

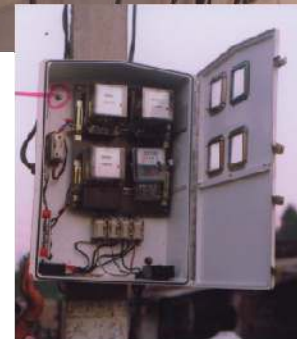
a. ENCLOSURES

SMC METER BOXES

RANGE & SPECIFICATIONS:

Sr. No.	Product Code	Inside Dimensions (mm) H x W x D	Typical applications
SINGLE HINGED DOOR			
01	GSMB-2520	250x200x105	L.T. 1 Phase KWh Meter
02	GSMB-2522	250x220x135	L.T. 1 Phase KWh Meter
03	GSMB-2525	250 x 250 x 155	L.T. 1 Phase KWh Meter
04	GSMB-2835-PC	285 x 230 x 150	1 Ø Meter Box With Transparent Lid
05	GSMB-3428	340 x 285 x 120	L.T. 3 Phase KWh Meter
06	GSMB-3525	350 x 250 x 150	L.T. 3 Phase KWh Meter
07	GSMB-3527	350 x 270 x 200	L.T. 3 Phase KWh Meter
08	GSMB-3726	325 x 220 x 150	L.T. 3 Phase KWh Meter
09	GSMB-3920	390 x 200 x 105	L.T. 3 Phase KWh Meter
10	GSMB-3923	380 x 225 x 140	L.T. 3 Phase KWh Meter
11	GSMB-3727	370 x 270 x 210	L.T. 3 Phase Static KWh Meter
12	GSMB-4030	400 x 300 x 190	L.T. 3 Phase KWh Meter
13	GSMB-4537	450 x 375 x 200	L.T. 3 Phase KWh Meter & Modam
14	GSMB-5345	530 x 450 x 175	Multimeter Box for housing 4 Nos. 1 Phase Meters and 3 Nos. 3 Phase Meters Meter & Modam Box
15	GSMB-5030	500 x 300 x 230	Meter & Modam Box
16	GSMB-5431	540 x 310 x 200	Meter & Modam Box
17	GSMB-3757-1	345 x 480 x 135	1Phase 2 Meter Box
18	GSMB-3750	345 x 480 x 210	Multimeter Box for housing 3 Nos. 1 Phase Meters H.T. TVM with TTB
19	GSMB-5728	570 x 280 x 220	MultiMeter Box for 4 Nos. 1-Ph & 2 Nos. 3-Ph KWh Meters
20	GSMB-6545	650 x 450 x 150	MultiMeter Box for 6 Nos. 1-Ph & 4 Nos. 3-Ph KWh Meters
21	GSMB-7450	700 x 480 x 210	MultiMeter Box for Housing 10,12,16 Nos. 1 Phase Meters and 6, 9 Nos. 3 Phase Meters
22	GSMB-10069	1000 x 690 x 215	
DOUBLE HINGED DOOR			
23	GSMB-4422	430 x 215 x 150/120	L.T. 1 Phase KWh Meter with MCB and with viewing window for MCB
24	GSMB-4422-I	430 x 215 x 150/120	L.T. 1 Phase KWh Meter with MCB
25	GSMB-5628	505 x 240 x 150	L.T. 3 Phase KWh Meter with MCB and with viewing window for MC
26	GSMB-5628-I	505 x 240 x 150	L.T. 3 Phase KWh Meter with MCB
27	GSMB-5628-II	505 x 240 x 265/150	L.T. 3 Phase Electronic KWh Meter mounted on cast resin bar primary C.
28	GSMB-6535	650 x 350 x 250	L.T. TVM with CT's
29	GSMB-6535-I	650 x 350 x 210	L.T. TVM with CT's
30	GSMB-6535-II	650 x 350 x 255	L.T. TVM with CT's
31	GSMB - 7627	760 x 270 x 170	L.T. TVM with CT's
32	GSMB-8135	815 x 350 x 230	L.T. TVM with CT's
33	GSMB-8535	850 x 350 x 250	L.T. TVM with CT's
34	GSMB-9035	900 x 350 x 250	L.T. KWh/TVM with fuses/CT's/TTB
35	GSMB-9045	900 x 450 x 250	L.T. TVM with CT's
36	GSMB-7450	700 x 480 x 210	MultiMeter Box for Housing 4,6 Nos. 1 Phase Meters and 4 Nos. 3 Phase Meters L.T. TVM with CT's & Modam
37	GSMB-10035	1000 x 350 x 230	
SINGLE DOOR PUSH FIT			
38	GSMB-2520-T	250 x 200 x 105	1 Phase KWh Meter (Electronic) with P.C. Transparent Lid
39	GSMB-2619-T	260 x 190 x 129	1 Phase KWh Meter (Electronic) with P.C. Transparent Lid
40	GSMB-3428	340 x 285 x 120	1 Phase KWh Meter (Electronic)
41	GSMB-3833	384 x 334 x 125	3 Phase Electronic KWh Meter
42	GSMB-3727	370 x 270 x 210	3 Phase Electronic KWh Meter
43	GSMB-3727-1	370 x 270 x 145	3 Phase Electronic KWh Meter

Unique Features: ● Single piece moulded without any joints ● Concealed metal hinges ● Mounting screws fitted from inside ● Metal hardware for wire seal ● Adequate space for meter and cut-outs ● Light weight, yet strong ● Wide range for different applications ● Excellent weatherability ● Safe for consumers ● Prices matching with conventional meter boxes



SMC DISTRIBUTION PILLAR BOXES

RANGE & SPECIFICATIONS:

Standard design made as per electrical requirements to suit conventional power distribution systems consisting of protection devices and metering also as per the clients requirements.

1. Mini pillars
2. 2 way feeder pillar boxes
3. 4 way feeder pillar boxes
4. 6 way feeder pillar boxes
5. 8 way feeder pillar boxes

Above configuration are available with electrical circuitry consisting of Bus bars works and protection devices such as re-wirable kitkats, HRC fuses, 1p / 3p MCCB, Switch disconnecter / Switch fuse disconnecter etc. to suit the customer requirements.

Note: Other sizes / rating & configurations available on request

Unique Features: ● Fabricated by combining SMC & Pultruded FRP sections ● Maintenance free, rust proof and shock proof ● Withstands coastal / polluted atmosphere, solar radiation and heavy rains ● Safe for human as well cattle due to insulated body

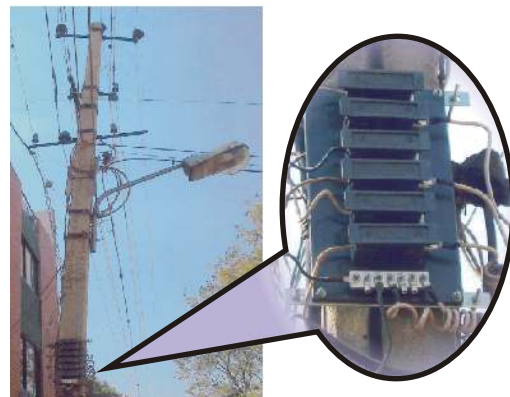


FRP AERIAL FUSE BOARDS

RANGE & SPECIFICATIONS:

Range & Rating of Sintex Aerial Fuse Boards		
Fuse Ratings	Product Code	
	3 way	6 way
15 A	GSFB-15A3-01	GSFB-15A6-01
30 A	GSFB-30A3-01	GSFB-30A6-01
60 A	GSFB-60A3-01	GSFB-60A6-01
> 60 A	Please contact us for fuse box	

Unique Features: ● FRP base fuse board ● Sintex FRP Fuse boards do not shatter ● Integrated parts, No detachment ● Excellent Di-electric strength, No leakage ● Safe, tried & tested method ● No decay; Long life



MOULDED SERVICE CONNECTION BOARDS

RANGE & SPECIFICATIONS:

Product Code	Size (mm) H X W	Description	Suitable for installation of
GSBPL-2515	250 X 150	1 Ø Service Connection Board	DP Switch, Lamp Holder, Switch & Fuse
GSBPL-3025	300 X 250	1 Ø Service Connection Board	1 Ø Meter, DP Switch, Lamp Holder, Switch & Fuse
GSBPL-3520	350 X 200	1 Ø Service Connection Board	1 Ø Meter, DP Switch, Fuse & Earth Terminal
GSBPL-3030	300 X 300	1 Ø Service Connection Board	1 Ø Meter DP MCB & Earth Terminal
GSBPL-4530	450 X 300	1 Ø Service Connection Board	1 Ø Meter, Lamp Holder, Switch, Earth Terminal, Neutral Link

*Custom sizes also available as per customer requirements

Complete BPL KIT consisting of all the items required for giving BPL connection is also available upon request.

Unique Features: ● Excellent outdoor weatherability ● Rust proof, water proof and termite proof ● Withstands solar radiation and heavy rains ● Excellent finish and dimensional consistency ● Maintenance free ● No decay so no painting or plank replacement required ● Consistent quality and timely delivery to match pace of project



SMC DISTRIBUTION BOXES

RANGE & SPECIFICATIONS:

Sr. No.	Product Code	Inside Dimensions (mm) H x W x D	Typical Applications
SINGLE HINGED DOOR			
1.	GSDB-3020	290x195x100	1 Phase Service Connection Distribution Box, Fuse Box
2.	GSDB-3126	270x225x135	Electrical and Hydraulic Instruments, Cutouts, Controls and Switchgear
3.	GSDB-3428	340x285x120	Fuse Box
4.	GSDB-3525	350x250x150	Fuse Box
5.	GSDB-3527	350x270x200	Fuse Box
6.	GSDB-3726	325x220x150	Fuse Box
7.	GSDB-3750	345x480x135	Pole top DB
8.	GSDB-3920	390x200x105	Fuse Box
9.	GSDB-3727	370x270x210	Busbar Chamber Box
10.	GSDB-4030	400x300x190	3 Phase Service Connection
11.	GSDB-5431	540x310x200	Distribution Box/ ABC Distribution Box
12.	GSDB-5728	570x280x220	Busbar Chamber box
DOUBLE HINGED DOOR			
13.	GSDB-4422	430x215x150/120	Control Terminal Box, Fuse Box
14.	GSDB-4422-I	430x215x150/120	Control Terminal Box, Fuse Box
15.	GSDB-5628	505x240x150	Busbar Chamber Box
16.	GSDB-5628-I	505x240x150	Busbar Chamber Box
17.	GSDB-5628-II	505x240x265/150	Busbar Chamber Box
18.	GSDB-6050	600x500x250	1 Phase Distribution Box
19.	GSDB-6535	650x350x250	Busbar Chamber Box
20.	GSDB-6535-I	650x350x210	Busbar Chamber Box
21.	GSDB-6535-II	650x350x255	Busbar Chamber Box
22.	GSDB-7450	700x480x210	Electrical Control and Switchgear items such as MCCB, Fuse, Isolator and Busbar Distribution Box
23.	GSDB-10069	1000x690x300	Electrical Control and Switchgear items such as MCCB, Fuse, Isolator and Busbar Distribution Box
24.	GSDB-11569	1150x690x350	Electrical Control and Switchgear items such as MCCB, Fuse, Isolator and Busbar Distribution Box
25.	GSDB-120110	1200x1100x400	With Canopy + Front & Back (Optional) Doors & Pedestal (Optional) TNEB Mini & UGVCL FSP

Unique Features: • High heat distortion temperature (200°C) as per IS: 10192 • Fire retardant-Class FV0 as per IS:11731 Part II or V0 as per UL 94 • Non-fusing • Shock-proof & rust-proof • Rot-proof and termite resistant • 100% weatherable • Ideal for indoor and outdoor use • Elegant appearance



SMC DISTRIBUTION BOARDS (DBs)

RANGE & SPECIFICATIONS:

Sr. No.	Product Code	Inside Dimensions (mm) H x W x D	Applications
01	GS-DB-1510	155x100x60	4-way
02	GS-DB-1816	185x160x60	8-way
03	GS-DB-2818	208x185x60	12-way

Unique Features: • Special folded construction for preventing ingress of water, insects or dust • Special folded cover for allowing the hinges to be fitted in such a way that it can't be opened once it is fitted (provision for concealed hinges for total security) • Moulded plastic extension pieces for fixing onto the wall • Moulded-in louvers for ventilation • Moulded-in projections for fixing MCB, Switches etc. • Holes on sides for dissipation of heat



SMC DISTRIBUTION BOARDS (DBs)

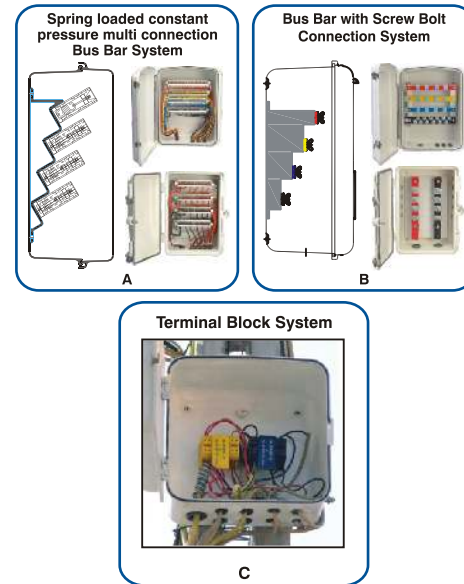
RANGE & SPECIFICATIONS:

Sr. No.	Product Code	Approx. Dimension	No. of Service Connection I/C	O/G	No. of Bus Bar Module
(A) SMC Service mains D.B. having Spring Loaded Constant Pressure Multi Connection Bus Bar in SMC Casing					
1	GSSB-3020-406	300 x 200 x 130 mm	1 No. 3 Ph. TPN	5 Nos. TPN	4 Nos. 6 Way
2	GSSB-3020-406 A	300 x 200 x 130 mm	1 No. 1 Ph. SPN	9 Nos. SPN	4 Nos. 6 Way
3	GSSB-4030-210	400 x 300 x 190 mm	1 No. 1 Ph. SPN	9 Nos. SPN	2 Nos. 10 Way
4	GSSB-4030-410	400 x 300 x 190 mm	1 No. 3 Ph. TPN	9 Nos. TPN	4 Nos. 10 Way
5	GSSB-4030-410 A	400 x 300 x 190 mm	1 No. 1 Ph. SPN	17 Nos. SPN	4 Nos. 10 Way
(B) SMC Service mains D.B. having Bus Bar with screw bolt connection through Fly Nut					
1	GSSB-3020-2 BB	300 x 200 x 130 mm	1 No. 1 Ph. SPN	5 Nos. SPN	2 Nos. 6 Way
2	GSSB-3923-BB	380 x 225 x 140 mm	1 No. 1 Ph. SPN	8 Nos. SPN	2 Nos. 9 Way
3	GSSB-3527-2 BB	350 x 270 x 210 mm	1 No. 1 Ph. SPN	8 Nos. SPN	2 Nos. 9 Way
4	GSSB-4030-4 BB	400 x 300 x 190 mm	1 No. 3 Ph. TPN	4 Nos. TPN	4 Nos. 5 Way
5	GSSB-4030-4 BB A	400 x 300 x 190 mm	1 No. 1 Ph. SPN	12 Nos. SPN	4 Nos. 9 Way
6	GSSB-4537-BB	450 x 375 x 200	1 No. 3 Ph. TPN	4 Nos. TPN	4 Nos. 5 Way
(C) SMC Service mains D.B. with clip on type terminal blocks (TB)					
1	GSDB-3020-SP05-FB	300 x 200 x 105 mm	1 No. 1 Ph. SPN	5 Nos. SPN	Link Mounted TB
2	GSDB-4030-TP04-FB	400 x 300 x 190 mm	1 No. 3 Ph. TPN	4 Nos. TPN	Link Mounted TB

* Other sizes of SMC Boxes and items made of thermoplastic material available against specific inquiry.

Unique Features:

- Ingress protection to IS: 8623
- Pole mounting arrangement
- Bus Bar for high fault currents
- Cable entry from bottom and/or sides
- Easy and organized management of consumer connections
- Shock proof, rust proof, suitable for polluted atmosphere
- Very high working temperature and higher arc resistance
- Outdoor weatherable and maintenance free



SMC POLE MOUNTED JUNCTION BOXES (STREET LIGHT BOXES)

RANGE & SPECIFICATIONS:

Sr. No	Product Code	Inside Dimensions (mm) H x W x D	Typical Applications
Side Hinged - Door fixed to base with hinges			
01	GS-JB-1414	140 x 140 x 95	Junction Box/cut-out box/ Fuse Box for single phase/ 2
02	GS-JB-2014	200 x 140 x 95	Core low wattage FTL/CFL based lighting system for pedestrian/pathway illumination.
03	GS-JB-2817	240 x 130 x 110	Pole Mounted Junction Box/cut-out box/ Fuse Box for road /street lighting for 3 phase/4 core high wattage HPSV/HPMV/MH based lighting system for Industrial, commercial as well as flood lighting applications
04	GS-JB-2520	250 x 200 x 105	
05	GS-JB-3020* (right hinged)	300 x 200 x 105	
Top Hinged - Door fixed to base with hinges on Top			
01	GS-JB-1616-T	140 x 140 x 100	Junction Box/cut-out box/ Fuse Box for single phase/ 2 Core low wattage FTL/CFL based lighting system for pedestrian/pathway illumination.
02	GS-JB-3016-T	275 x 135 x 110	Pole Mounted Junction Box/cut-out box/ Fuse Box for road /street lighting for 3 phase/4 core high wattage HPSV/HPMV/MH based lighting system for Industrial, commercial as well as flood lighting applications
Sliding - Door fits to base by means of sliding			
01	GS-JB-3416-S	340 x 160 x 90	Pole Mounted Junction Box/cut-out box/ Fuse Box for road /street lighting for 3 phase/4 core high wattage HPSV/HPMV/MH based lighting system for Industrial, commercial as well as flood lighting applications. Provision for fixing 2 cut-outs, one for Lighting and other for Kiosks/ signage/ emergency power supply
Removable - Door fixed to the base by means of hardware			
01	GS-JB-1510-R	155 x 100 x 60	Control terminal box/cut-out box
02	GS-JB-1816-R	185 x 165 x 60	
03	GS-JB-2818-R	280 x 180 x 60	



STARTER PANELS

RANGE

- Mini Dol Starter
- Dol Starter
- Single Phase Starter Panel Box
- Three Phase Starter Panel Box
- Star Delta Starter Panel Box
- Pump Panel House
- Custom Sizes also available

Unique Features: • shock Proof & Rust Proof • Fire Proof • Longer Life & Light Weight • Weather Proof • Maintenance Free



WATER METER BOXES

Unique Advantages

- Avoids meter damage
- Avoids tampering of meter
- Enclosure made of rust proof material
- Viewing window provided for meter reading from outside
- Box sealing provision provided
- Weatherproof
- Maintenance free



Meter boxes available for :
1, 2, 3 & 4 inch meters



b. OTHER APPLICATION

FRP STRAIGHT CROSS ARMS (REC Design)

RANGE & SPECIFICATIONS:

11 KV Cross Arm.

11 KV Top Hamper

33 KV Cross Arm

33 KV Top Hamper

Note: Conforms to REC specification

No. 40 Rev. 97 for 11 KV

NO. 42 Rev. 97 for 33 KV

Unique Features : Insulating and hence no birdage problem • Light weight yet strong • Special Polymeric reinforcement provided for hardware as per REC specifications • Anti corrosive • Ideal for all types of weather conditions • Made from advanced composite of plastics • Safe for the working personnel



FRP 'V' TYPE CROSS ARMS

RANGE & SPECIFICATIONS:

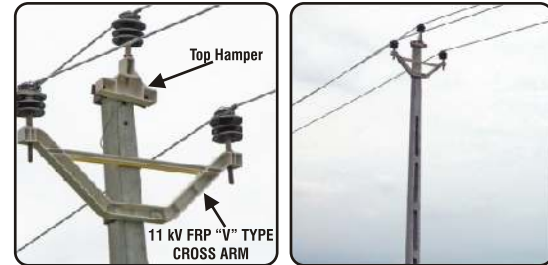
Product Code	Description	Application
GSXA-011-01	V Type Cross Arm	11 KV Lines 3Ø/1Ø Composite & 1Ø (Ph-N)
GSTH-011-01	Top Hamper	/(Ph-Ph) type with or without Earthwire

*Custom sizes also available as per customer requirements

NOTE : FLAT Type FRP Cross Arms of 11KV & 33KV as per REC Specifications and of 2' & 4' length with various Pin configurations are also available

Unique Features :

- Anti-corrosive - suitable for coastal and polluted atmosphere. Ideal for Harsh Weather Conditions
- No change in conductor formation /configuration as well as ground clearance while replacing metal "V" type Cross Arms of existing lines
- Maintenance Free - No painting, saving of recurring cost and labours
- Suitable for 11 kV overhead line
- Lightweight yet strong
- Safe for the working personnel
- Reduced Transportation cost and Ease of Erection
- Insulating - Flashing of Insulators minimized
- Earthing of pins can be dispensed
- Made from advanced plastics composite Confirming to IS



COMPOSITE INSULATORS

RANGE & SPECIFICATIONS:

Sr. no.	Product Code	System Voltage kV(rms)	Rated Mechanical Load kN(min)
1.	GP-INS-11-45	11	45
2.	GP-INS-33-45	33	45
3.	GP-INS-33-70	33	70
4.	GP-INS-66-90	66	90
5.	GP-INS-66-120	66	120
6.	GP-INS-110-90	110	90
7.	GP-INS-110-120	110	120
8.	GP-INS-132-90	132	90
9.	GP-INS-132-120	132	120
10.	GP-INS-220-90	220	90
11.	GP-INS-220-120	220	120

Unique Features:

- No Gap between sheath & fitting
- Results in permanent protection of rod against pollution & moisture
- Seamless Sheath & Weather shades
- Core made out of Pultruded glass fibre reinforced epoxy resin rod
- Metal End Fittings attached to the rod by crimping on automatic crimping machine.



FRP CABLE TRAYS

RANGE & SPECIFICATIONS:

Cable trays are used to support power cables & control cables for indoor and outdoor applications.

G.I./M.S. cable trays erode, corrode and spread heat, thus lead to power interruptions. Sintex FRP Cable Trays are safe, durable and cost effective for routing & supporting cables. Manufactured as per NEMA/ BIS/ Consultants' specifications, Sintex FRP Cable Trays are available in the following types: -

Ladder type FRP Cable Trays:

Two longitudinal side rails connected by rungs at regular interval.

Through type FRP Cable Trays:

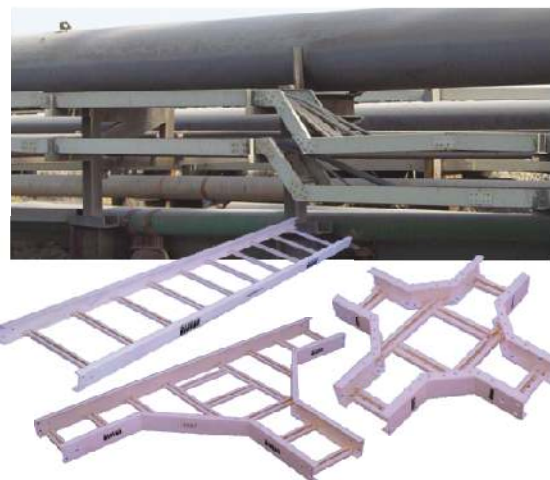
Structures with a solid or perforated bottom with integrated or separate longitudinal side rails.

Channel type FRP Cable Trays:

Structures with a solid or perforated bottom with integral side rails.

Unique Features:

- Excellent weatherability-UV stabilized
- Fire retardant
- Non-magnetic
- No corrosion, no chemical erosion
- Maintenance-free
- Light weight
- High load bearing capacity
- Easy to install
- Suitable for horizontal, vertical layout



FRP CABLE TRAYS FOR BTS SHELTERS

RANGE & SPECIFICATIONS:

- Standard modular designs to suit current BTS Shelter with cable tray width of 250, 300, 400, 450, & 500 mm
- Customised solution with different sizes and configuration in modular design to suit various requirements available against enquiry

Unique Features: • Modular design - easy to install on site and to relocate • Light weight yet strong • Anti-corrosive - no problem of condensation led corrosion • Maintenance free • Specially designed for prevention of damage to cables during laying or pulling • All components used including H/W are of non-magnetic type • EMI-transparent for perfect working of equipments inside the shelter



SMC CHEQUERED PLATES

RANGE & SPECIFICATIONS:

Rating of Equipment	Recommended Thickness of Sintex SMC Chequered Plates
3.3 KV Equipment	2.5 mm
6.6 KV Equipment	2.5 mm
11.0 KV Equipment	2.5 mm
22.0 KV Equipment	2.5 mm
33.0 KV Equipment	5.0 mm
66.0 KV Equipment	5.0 mm
EHT Switch Yard	10.0 mm

Unique Features: • Durable and resistant to decay • Maintenance-free • High dielectric strength • High life expectancy • Light weight, yet strong • Anti-corrosive • Can withstand the load of breaker trolleys without obstructing their movement • Tested as per IS



SMC TRENCH COVERS & GRATINGS

RANGE & SPECIFICATIONS:

Length	: 1 Metre
Width	: 0.3, 0.45, 0.6, 0.75, 0.9, 1, 1.2 metre respectively or as per order.
Colour	: Grey (Sintex Trench Covers & Gratings are also supplied prefabricated with reinforcements of MS sections or FRP Pultruded sections to meet specific load applications)

Unique Features: • Light weight, yet strong • Durable and resistant to decay • Anti-corrosive • Resistant to wear and tear • Zero resale value, hence no problem of pilferage • High life expectancy • Fire retardant



SMC SHEETS

RANGE & SPECIFICATIONS:

Size	1 M X 1 M
Standard thicknesses	1.5, 2.5, 4, 6, 9, 12 & 15 mm
Material of construction	Sheet Moulding Compound (SMC)
Custom thicknesses	From 1.5 mm to 15 mm depending on large requirements
Colour-standard	Off-white
Custom	Other colours can be offered against large requirements

Unique Features: ● Excellent dielectric properties such as volume resistivity, surface resistivity, arc resistance and comparative tracking index ● Non-hygroscopic and retain the dielectric properties even in presence of high humidity ● Can withstand continuous temperatures up to 140^o C ● Anti-corrosive and resistant to most acids, alkalis & chemicals ● Weatherable and suitable for all kinds of climatic conditions ● Self-coloured and maintenance-free ● Light weight, strong, stiff and clean



FRP BATTERY STANDS

Battery Stand is fabricated using FRP sections and polymeric hardware. Designs available in single row or double row and also in single tier or double tier. Dimensions and load bearing members selected to suit the battery. Sintex FRP Battery Stands are available for all types and all makes of battery.

Unique Features: ● Excellent dielectric strength, hence eliminating leakage of current ● No effect against termite & fungus attack ● Self coloured ● Light weight, yet strong ● Easy to clean & wash ● No warping ● No maintenance costs ● Resistant to battery acids



PULTRUDED SECTIONS

- Angles
- Rods
- 'C' Sections
- Hollow Rectangular Sections
- 'I' Sections
- Custom made Sections
- Approximately 50 Different sizes & shapes available to choose from

Note: 1. Jobs for custom designed sections can be taken up

2. Specific resin system can be adopted against bulk requirements.

Unique Features: ● High strength to weight ratio ● Corrosion-proof and suitable for most acids, alkalis & chemicals ● Suitable for all types of weather conditions ● Self colored and generally do not require painting ● Excellent electrical properties such as tracking resistance, high arc resistance and electrical insulation ● Poor conductor of heat & sound ● Stable in continuous operating in axial direction ● Light weight, strong & durable ● Can be joined with mechanical fasteners or adhesives



FRP LADDERS

RANGE & SPECIFICATIONS:

Introducing for the first time in India, Sintex FRP Ladders can be used for a variety of applications in domestic as well as industrial use. Manufactured as per international OSHA specifications, Sintex FRP Ladders are an optimum combination of safety, elegance and economy.

Range :

Self Support	Wall Support	Extendable
'A' type		
6 ft. (GPFL-060-01)	15 ft. (GPFL-150-WS)	20 ft. (GPFL-200-ES)
5 ft. (GPFL-050-01)	18 ft. (GPFL-180-WS)	40 ft. (GPFL-400-ES)
4 ft. (GPFL-040-01)		
3 ft. (GPFL-030-01)		

Unique Features : Shock-proof • Lightweight yet strong • Lightweight • Safe & durable • Compact & easy to carry • Rust-proof & water-proof • Designed for optimum stability as per international OSHA & ANSI standards



SMC DANGER NOTICE PLATES

RANGE & SPECIFICATIONS:

Sr. No.	Product Code	Size (in mm)	Application Height (H) X Width (W)
01	GSSH-2025-1.6	200 X 250	For 11KV and HV installation
02	GSSH-1520-1.6	150 X 200	For 415 V and LV installation

*Custom sizes also available as per customer requirements

Unique Features : • Excellent finish and dimensional consistency • Excellent outdoor weather ability • Rust proof • Withstands coastal and polluted atmosphere • Withstands solar radiation and heavy rains

Maintenance free: Base material SMC does not corrode. Hence, painting remains in place for longer duration • Transparent coating over the printed matter is also weather resistant Pilder proof: Zero resale value in scrap market • No fear of vandalism



FRP FENCING

Applications

- Fencing for Electrical Transformers or Substations
- Fencing for Road Divider
- Fencing for Garden/ House
- Staircase fencing

Unique Features: • Non Conductive - High Dielectric Capability • High Strength • Non Corrosive Nature • Termite Proof/ Rot Proof • Aesthetic Look • Self Colored • Zero Resale Value - Pilder Proof • Durable - Long Life • Maintenance Free • Fire Retardant

